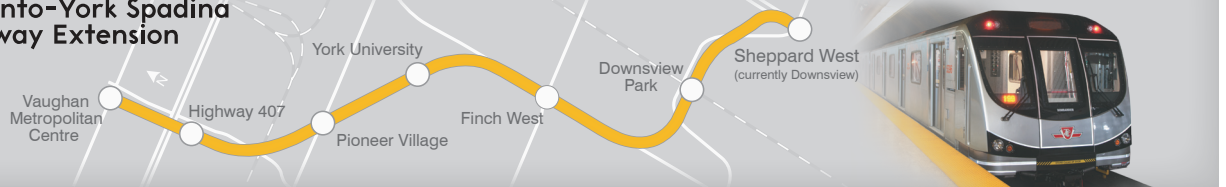




## Toronto-York Spadina Subway Extension



SPECIAL CONSTRUCTION NOTICE | June 23, 2014

# Local Closures of Keele Street through Summer

The new Finch West subway station is progressing well with large portions of the station structure complete. Construction has reached a point where significant work must be done across Keele Street to remove traffic bridges, install utility connections and backfill over the station structures.

### Two Sections of Keele Street Closed During Summer

One block of Keele Street, between Finch Avenue West and Four Winds Drive, will be closed to all traffic from July 7 to August 31, 2014 for work across Keele Street.

Keele Street southbound, for a 100 m section south of Finch Avenue West, will be closed from July 7, 2014 for about 2 weeks. The closure is necessary to allow multiple utility connections and to remove the temporary bridge.

Finch Avenue West will remain open during this period. Access to local businesses will be maintained on Finch Avenue West.

### Detour Route Open Throughout Closure

**The detour route via Murray Ross Parkway/Tangiers Road/Toro Road will be open throughout this period for traffic to bypass the closure area.** Detour signs will be posted to redirect through traffic to alternate routes. Motorists can expect to experience traffic delays. The map on the back shows the detour route in either direction.

**Note** that trucks are not permitted on Keele Street south of Murray Ross Parkway or on Broadoaks Drive or Catford Road. Advance signage will be provided.

Motorists are asked to please obey all signs.

### TTC Bus Routes

Transit delays may be experienced on 36 Finch West, 107 Keele North and 41 Keele. Northbound and southbound bus routes that normally travel on Keele Street will use the detour route. New bus stop locations are shown on the map.

### Pedestrian Access/Walkways

There may be periodic closures of pedestrian pathways, and alternate routes will be provided. Pedestrians should follow the posted signage and take extra care when walking near or through construction areas.

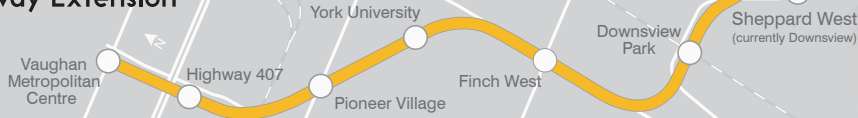
### Construction Work Hours

The City of Toronto has approved a noise by-law amendment for major transit projects which allows contractors to work extended hours and on weekends for the duration of the project, when required. Extended work hours are expected to be in effect in the Keele/Finch area this spring and summer.

Finch West Station construction work is permitted under the noise by-law from 7:00 a.m. to 11:00 p.m., seven days per week. The contractor has applied for an exemption to the noise by-law for major concrete pours this spring and summer for work outside of these hours. Construction Notices will be sent out before extended work hours begin to keep residents and businesses informed.



# Toronto-York Spadina Subway Extension



## TTC Bus Routes Affected

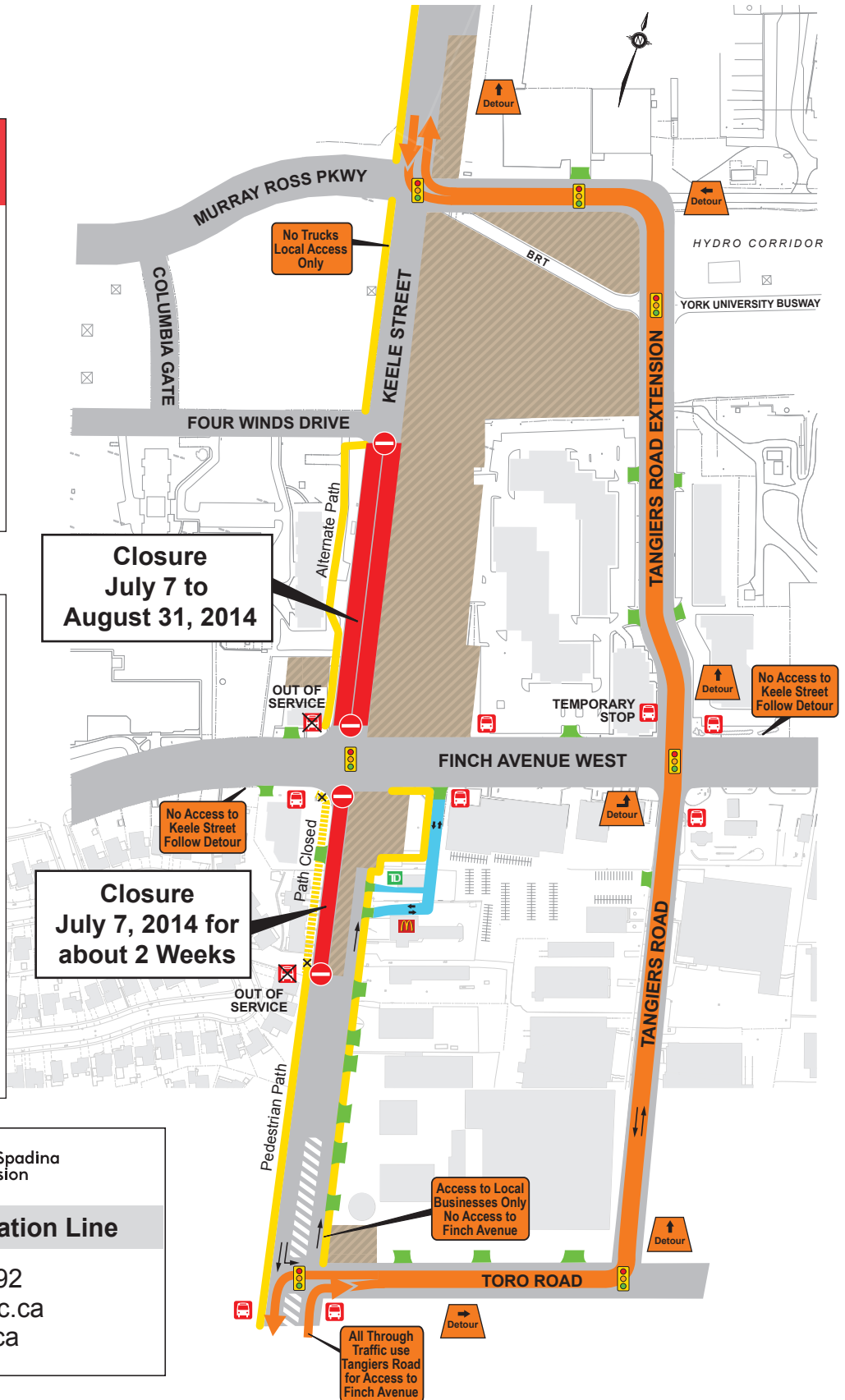
Transit delays can be expected on buses during peak times

- 36 Finch West
- 107 Keele North (detour)
- 41 Keele (detour)

Bus stops will be temporarily relocated for construction. Watch for posted notices.

### LEGEND

- Keele Closures
- Detour
- Open Driveway
- Road Closed to Traffic
- TD & McDonalds Access
- Pedestrian Path
- Pedestrian Path Closed
- Bus Stop
- Areas of Construction
- Detour Route



Toronto-York Spadina Subway Extension

## Construction Information Line

1.800.223.6192  
[www.spadina.ttc.ca](http://www.spadina.ttc.ca)  
 TYSSE@ttc.ca